



BOW THEMES
We make Joomla better



BT Facebook Likebox

JOOMLA EXTENSION

User guide

Version 2.0

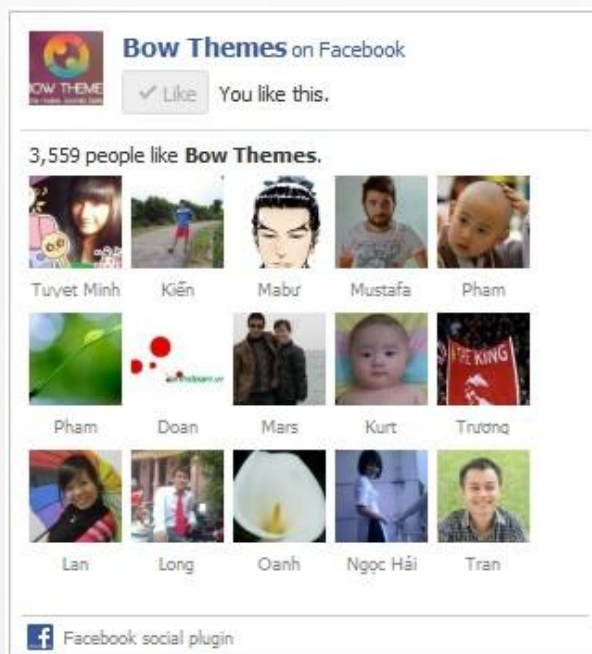


Table of Contents

Introduction	2
Related Topics	2
Product Features	2
Installing and Upgrading.....	3
System Requirement	3
Downloading	3
Manual Installation.....	3
Module Upgrading.....	4
Uninstalling	5
Setting	6
Basic Options.....	6
Advanced Options	8
Contacting Bowthemes	9

Introduction

BT Facebook like box, a Joomla 1.6 and Joomla 1.7 native module which allows Facebook Page owners to attract and gain “Like” from their own website content using the FaceBook LikeBox API. BT Facebook Like box module now available for J! 1.7.

Related Topics:

[Details](#)

[View Demo](#)

[Forum](#)

Product Features

Optimization for facebook user

- Show how many users already like your page, and which of their friends like it too
- Read recent posts from the page
- Like the page with one click, without needing to visit the page

Joomla compatibility

- Compatible with Joomla 1.6 and Joomla 1.7

Cross Browser Support

- Compatible with IE7+, Firefox 2+, Safari 3+, Chrome 8+, Opera 9+

Support service

- Video tutorials and forum support provided

Installing and Upgrading

System Requirement

Server requirements	PHP 5.0 or above with GD library is enabled. Please follow this link to check it MySQL 5.0 or above Joomla 1.5.x or above;
Client requirements	Firefox 3.0.x, Internet Explorer 7 or above.

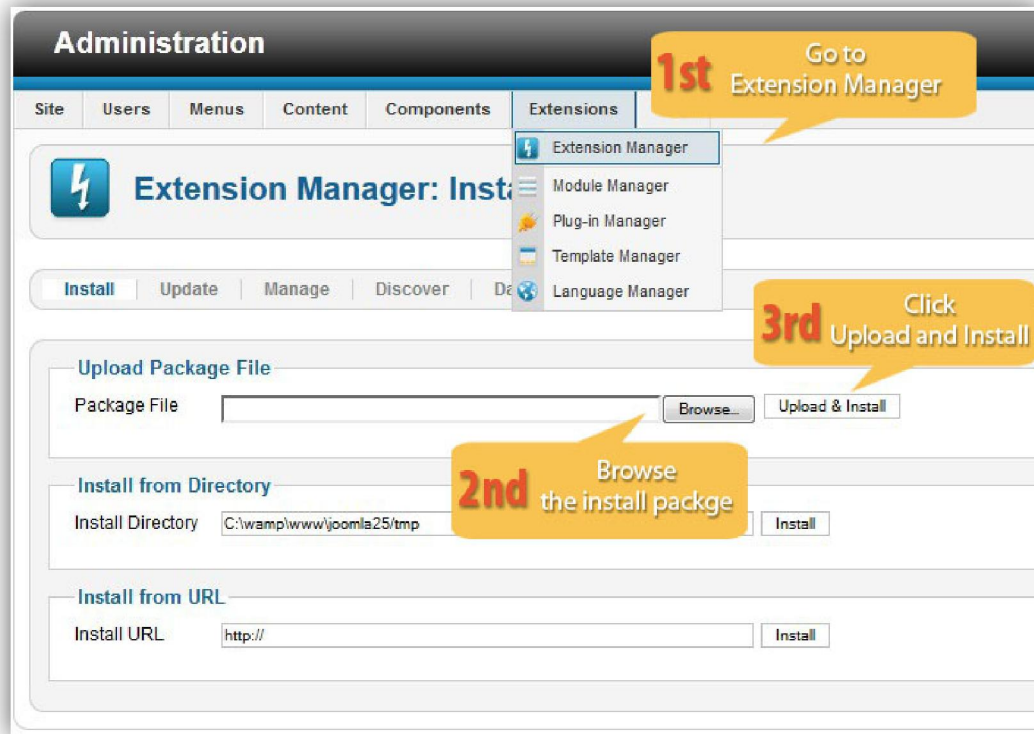
Downloading

BT Facebook Like Box is free extension, you can download it [here](#).

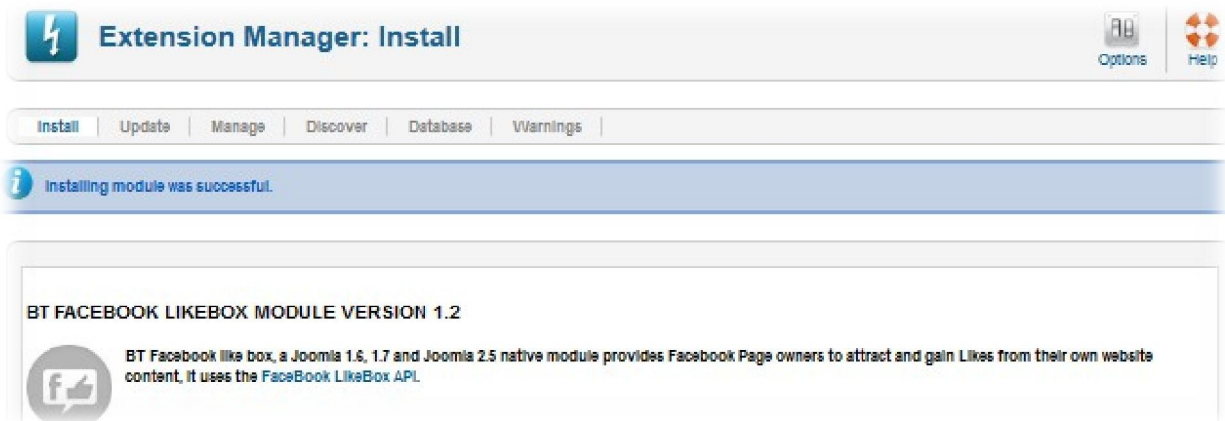
Manual Installation

Please follow these steps to install the product:

- Step 1: Go to Extension Manager
- Step 2: Browse the install package
- Step 3: Click "Upload & Install"



Illustrated image of successful installation:



Module Upgrading

Upgrading of this extension to newest version can be easily done by following again installation steps above. But we recommend you to back up your changes of source code and language files in this module before starting any upgrades.

Uninstalling

For uninstalling the product, please follow these steps:

Step 1: Go to “Extension Manager”

Step 2: Click to “Manage” tab

Step 3: Choose module style

Step 4: Mark checkbox of the module

Step 5: Click “Uninstall” button

The screenshot shows the Joomla! Extension Manager interface. At the top, there is a navigation bar with a lightning bolt icon and the text "Extension Manager: Manage". To the right of this bar are several icons: "Go to Extension Manager" (1st), "Enable" (green checkmark), "Disable" (red circle), "Refresh Cache" (blue circular arrow), "Uninstall" (blue trash can), and "Options" (grey folder icon). Below this is a secondary navigation bar with tabs: "Install", "Update", "Manage" (highlighted), "Discover", "Database", and "Warnings". A callout "5th Click Uninstall button" points to the "Uninstall" icon in the top bar.

The main content area has a filter bar with "Filter: BT" and a "Clear" button. A callout "2nd Click to Manage Tab" points to the "Manage" tab. Below the filter bar are dropdown menus for "Location", "Status", "Module", and "Folder". A callout "3rd Choose Component Type" points to the "Module" dropdown.

The main table lists various modules. A callout "4th Mark checkbox of the module" points to the checkbox of the "BT Content Showcase" module. The table has columns: Name, Location, Status, Type, Version, Date, Component Type, and Folder.

<input type="checkbox"/>	Name	Location	Status	Type	Version	Date	Component Type	Folder
<input type="checkbox"/>	BT Accordion Menu	Site	✓	Module	1.0	November 2011	Bowthemes	N/A
<input type="checkbox"/>	BT Background SlideShow	Site	✓	Module	2.1.3	Apr 2012	BowThemes	N/A
<input type="checkbox"/>	BT Content Showcase	Site	✓	Module	1.1	June 2012	www.bowthemes.com	N/A
<input type="checkbox"/>	BT Content Showcase	Site	✓	Module	2.0.0	Sep 2011	www.bowthemes.com	N/A
<input type="checkbox"/>	BT Facebook LikeBox	Site	✓	Module	1.2	Oct 2011	Bowthemes	N/A
<input type="checkbox"/>	BT Floater	Site	✓	Module	1.0	Apr 2012	Bowthemes	N/A
<input type="checkbox"/>	BT Image Gallery	Site	✓	Module	1.5	December 2011	Bowthemes	N/A
<input type="checkbox"/>	BT Login	Site	✓	Module	2.4.3	April 2012	BowThemes	N/A
<input type="checkbox"/>	BT Logo	Site	✓	Module	1.4.3	April 2012	BowThemes	N/A
<input type="checkbox"/>	BT Logo	Site	✓	Module	1.2	December 2011	BowThemes	N/A
<input type="checkbox"/>	BT Logo	Site	✓	Module	1.1	April 2012	BowThemes	N/A
<input type="checkbox"/>	BT Logo	Site	✓	Module	1.0	April 2012	BowThemes	N/A

Setting

Back-end access: Choose Extension Manager from the main menu. Click “Module Manager” and start searching the product by using keyword: “BT Facebook LikeBox” or using Joomla filter to quickly find.

The parameters are divided into the following areas:

- Basic Options
- Advanced Options

Basic Options

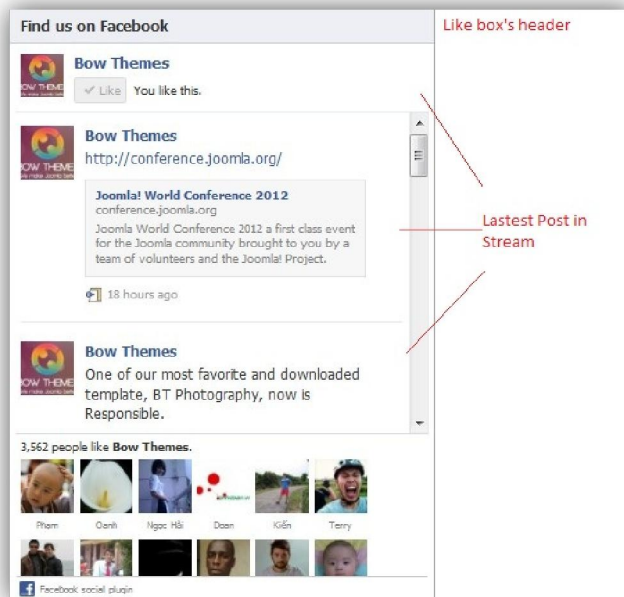
The screenshot shows the 'BASIC OPTIONS' configuration panel for the Facebook LikeBox module. The settings are as follows:

- Facebook Page URL ***:
- Box style**:
- Width**:
- Height ***:
- Number of faces**:
- Show stream**:
- Show header**:
- Force wall**:
- Color scheme**:
- Border color**:

Let's refer the detail setting in this section:

Facebook Page Url	Enter your facebook Fan Page's URL
Box Style	Choose from two box styles: Dropdown box and Modal Box
Width	Set module's width (unit: pixel)
Height	Set module's height (unit: pixel)

Number of faces	Specify number of displayed faces. The default height depends on face number, module's width and whether the stream is displayed
Show stream	Show/Hide stream of latest posts from the page's wall
Show header	Select whether you want to display header of like box at the top of module
Force Wall	This parameter for Place, specifies whether the stream contains posts from the Place's wall or just check in from friends. Not available in version 1.2 and before.
Color Scheme	Choose color stream of the box. There are two options: Light and Dark
Border Color	Choose color of the box's border. When you click to text box, a color picker will appear for you to choose a color.



Facebook Likebox with header and stream

Advanced Options

▼ ADVANCED OPTIONS

Module Class Suffix

Caching ▼

Cache Time

Module Class Suffix	Module will concatenate value of this parameter with string 'bt-facebookpage' to create a new CSS class for module. Example: 'bt-facebookpage_abc', module class suffix is '_abc'
Caching	Select whether you want to cache content of this module
Cache Time	Set interval between each caching time. Unit: minute

Contacting Bowthemes

All Bowthemes products include forum support, email support and ticket support. Please refer your membership package to select the compatible kind of support, as we may be able to solve the problem without delay.

Website: <http://bowthemes.com>

Forum support: <http://bowthemes.com/forums/11-bt-facebook-like/>

Email support: support@bowthemes.com

Ticket support: <http://bowthemes.com/submit-a-ticket>

If you encounter any issues with Bowthemes extensions and templates, email us at support@bowthemes.com and we will be happy to answer your questions.



This document is proprietary and confidential. No part of this document may be disclosed in any manner to a third party without the prior written consent of Bowthemes Team.