



BOW THEMES
We make Joomla better

BT Login – Joomla Extension

User guide
Version 2.0

LOGIN TO YOUR ACCOUNT

Don't have an account yet? [Register now!](#)

Username *

Password *

Remember Me

LOGIN

- [Forgot your password?](#)
- [Forgot your username?](#)

Table of Contents

Introduction	2
Related Topics.....	2
Product Features	2
Installing and Upgrading.....	3
System Requirement	3
Downloading.....	3
Manual Installation.....	3
Module Upgrading	4
Uninstalling	5
Setting.....	6
Basic Options.....	6
Advanced Options	10
Common Error Using Product	11
Javascript Error	11
Error in BT Arise.....	11
Contacting Bowthemes	12

Introduction

BT Login module is running alternatively with Joomla! Login module but have special styles associated and can be placed at various positions. You can also retain the standard login module in the default position. BT Login module is now available for J! 1.7 & 2.5

Related Topics:

[Details](#)

[View Demo](#)

[Forum](#)

Product Features

Friendly-use

- Convenience: Ability to run at the same time with login module of Joomla.
- Integration with components such as: K2, JoomSocial, Community Builder, and other components. This means that you can:
 - Integrate any login and register module with BT Login is available.
 - Load any module to replace login form and load any webpage with its url to replace register form as iframe.
- Simplicity: Easy and friendly back-end administration

Flexibility

- Appearance: with two styles Modal box and Dropdown box
- Position: allows user to open login/registration popup anywhere with click event. Using any id of HTML element to open login and register form is available.
- Redirection: allows user to choose redirect web page after Login or Logout

Quick and Safe

- Quick: The module use AJAX to send all submitted data
- Safe: Google ReCaptcha is supported.

Cross-browser support

- Compatible with Joomla 1.5, Joomla 2.5 and almost all web browsers: Firefox 3+, IE7+, Opera 9.5, Safari, Netscape, Google Chrome, Camino, Flock 0.7+.

Installing and Upgrading

System Requirement

Server requirements	PHP 5.0 or above with GD library is enabled. Please follow this link to check it MySQL 5.0 or above Joomla 1.7.x or above;
Client requirements	Firefox 3.0.x, Internet Explorer 7 or above.

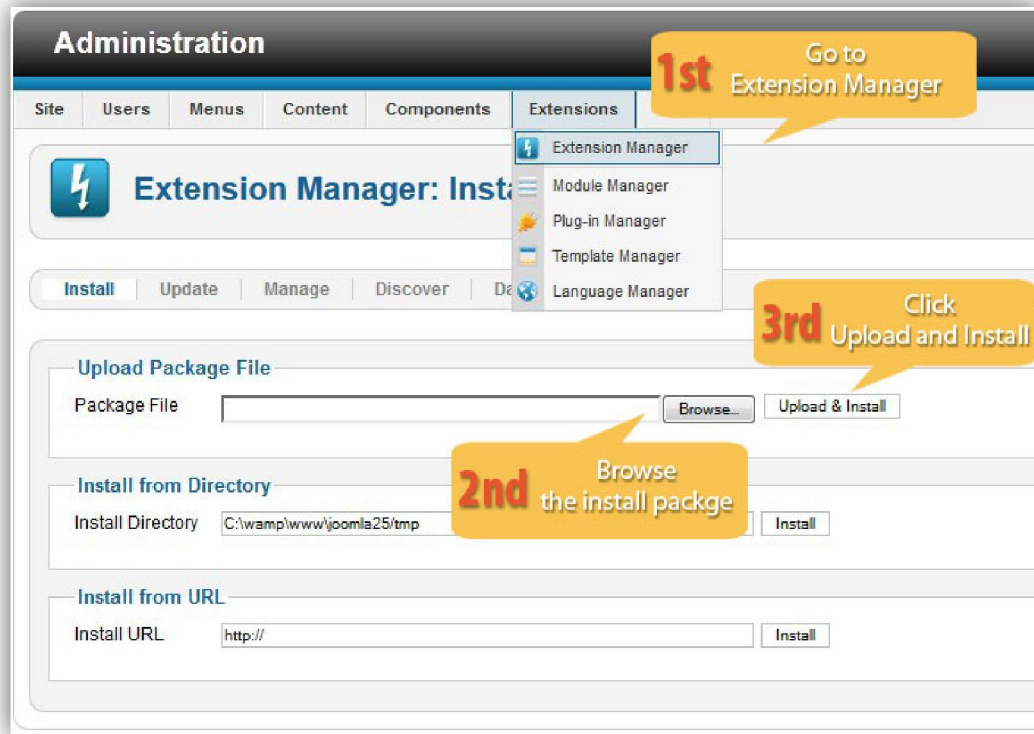
Downloading

BT Login is a free extension. Please download it [here](#).

Manual Installation

Please follow these steps to install the product:

- Step 1: Go to Extension Manager
- Step 2: Browse the install package
- Step 3: Click "Upload & Install"



Illustrated image of successful installation:



Module Upgrading

Upgrading of this extension to newest version can be easily done by following again installation steps above. But we recommend you to back up your changes of source code and language files in this module before starting any upgrades.

Uninstalling

For uninstalling the product, please follow these steps:

Step 1: Go to “Extension Manager”

Step 2: Click to “Manage” tab

Step 3: Choose module style

Step 4: Mark checkbox of the module

Step 5: Click “Uninstall” button

Extension Manager: Manage **1st** Go to Extension Manager

Enable Disable Refresh Cache Uninstall Options

Install Update **Manage** Discover Database Warnings **5th** Click Uninstall button

Filter: BT **2nd** Click to Manage Tab Clear Hide protected extensions - Select Location - - Select Status - Module - Select Folder

<input type="checkbox"/>	Name	Location	Status	Type	Version	Date	3rd Choose Component Type	Folder
<input type="checkbox"/>	BT Accordion Menu	Site	✓	Module	1.0	November 2011	Bowthemes	N/A
<input type="checkbox"/>	BT Background SlideShow	Site	✓	Module	2.1.3	Apr 2012	BowThemes	N/A
<input type="checkbox"/>	BT Content Showcase	Site	✓	Module	1.1	June 2012	www.bowthemes.com	N/A
<input type="checkbox"/>	BT Content Slider	Site	✓	Module	2.0.0	Sep 2011	www.bowthemes.com	N/A
<input type="checkbox"/>	BT Facebook LikeBox	Site	✓	Module	1.2	Oct 2011	Bowthemes	N/A
<input type="checkbox"/>	BT Flasher	Site	✓	Module	1.0	Apr 2012	Bowthemes	N/A
<input type="checkbox"/>	4th Mark checkbox of the module	Site	✓	Module	1.5	December 2011	Bowthemes	N/A
<input type="checkbox"/>	BT Login	Site	✓	Module	2.4.3	April 2012	BowThemes	N/A

Setting

Back-end access: Choose Extension Manager from the main menu. Click “Module Manager” and start searching the product by using keyword: “BT Login” or using Joomla filter to quickly find.

The parameters are divided into the following areas:

- Basic Options
- Advance Options

Basic Options

▼ BASIC OPTIONS

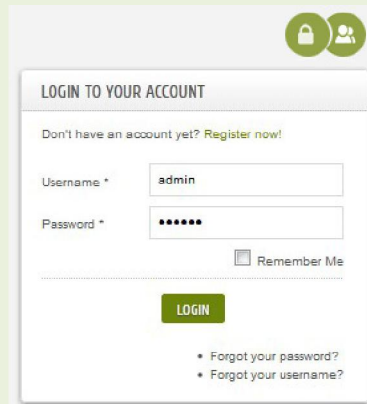
Align option	Right ▼
Display Type	Dropdown ▼
Mouse event	Click ▼
Login Redirection Page	Default ▼
Logout Redirection Page	Default ▼
Name/Username	Username ▼
Log out button	<input checked="" type="checkbox"/> YES
Registration tab	<input checked="" type="checkbox"/> YES
Login tags	<input type="text"/>
Registration tags	<input type="text"/>
Bg button color	<input type="text"/>
Text button color	<input type="text"/>
Logged Modules	User Menu x
Logged Modules	Select Some Options
Integrated component	None ▼

Let's refer the detail setting in this section:

Align Option

Align position of login and register buttons in relationship with the dropdown boxes

Right:



LOGIN TO YOUR ACCOUNT

Don't have an account yet? [Register now!](#)

Username *

Password *

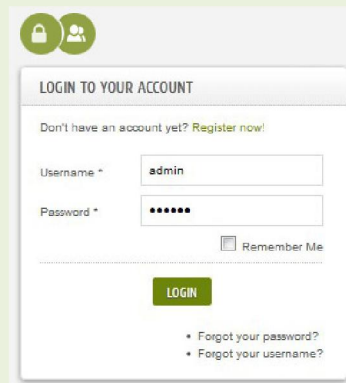
Remember Me

[LOGIN](#)

- [Forgot your password?](#)
- [Forgot your username?](#)

The login form is shown with the 'Remember Me' checkbox and the 'LOGIN' button aligned to the right side of the form.

Left:



LOGIN TO YOUR ACCOUNT

Don't have an account yet? [Register now!](#)

Username *

Password *

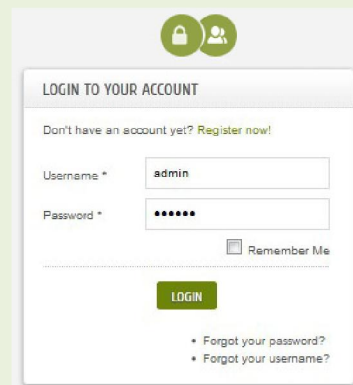
Remember Me

[LOGIN](#)

- [Forgot your password?](#)
- [Forgot your username?](#)

The login form is shown with the 'Remember Me' checkbox and the 'LOGIN' button aligned to the left side of the form.

Center:



LOGIN TO YOUR ACCOUNT

Don't have an account yet? [Register now!](#)

Username *


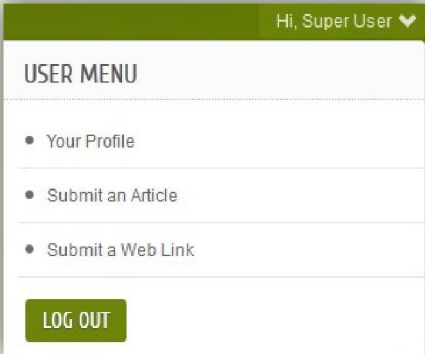
Password *

Remember Me

[LOGIN](#)

- [Forgot your password?](#)
- [Forgot your username?](#)

The login form is shown with the 'Remember Me' checkbox and the 'LOGIN' button centered horizontally within the form.

Display Type	Choose from two types: Dropdown box and Modal Box
Mouse event	Choose from two mouse events on the buttons to show boxes: Click or Hover (mouse over)
Login Redirection Page	Enter a link to which browser will redirect after a successful login. If no page was chosen, user will be redirected to Front Page.
Logout Redirection Page	Enter a link to which browser will redirect after a successful logout.
Name/Username	Choose Name or Username, which will be shown after login successfully
Logout button	<p>Select whether you want to show logout button when user logged in. Login button will be replaced by this button:</p>  <p>And while clicking on this button, a dropdown box appears. Content of this box can be a module or many module in a position. Please choose the module from two parameters: Logged modules and Logged Position. Module "User Menu" is default.</p> <p>So logout button will be shown in this box as below image:</p> 

Registration tab	Show/Hide register button
Login tags	Enter any <u>CSS selector</u> , including: HTML tag name, element's id or class. It will be used as login button and you can open login modal box from everywhere. Selectors must be separated by a comma.
Registration tags	Enter any <u>CSS selector</u> , including: HTML tag name, element's id or class. It will be used as login button and you can open registration modal box from everywhere. Selectors must be separated by a comma.
Bg button color	Select Background color of buttons. When you click on textbox a color picker will appear, please choose color here.
Text button color	Select color for button's text. A color picker will help you.
Logged Modules	After user logged in, there is a dropdown box with log out button. You can choose a module to display in this dropdown box.
Logged Position	Like Logged Modules, selected position to be showed in logout dropdown box. (At version 2.4.3, this label is duplication of "Logged Modules")
Integrated component	With this parameter, you can choose a login module from other components which are installed on your site. The options are: <ul style="list-style-type: none"> - None: Use original login module of Joomla - User Component: Use original login module - K2 Component: Use K2 login module - Joomsocial Component

	<ul style="list-style-type: none"> - Community Builder Component - Option: you can load any other modules. After selecting, two parameters: Option module and Option link will appear
Option module	Choose a module from a list as login module
Option link	Type a URL of webpage to make it register page.

Advanced Options

▼ ADVANCED OPTIONS

Load JQuery

Module Class Suffix

Caching

Cache Time

Load JQuery	Select whether you want to load JQuery library. "Auto" is recommended
Module Class Suffix	Module will concatenate value of this parameter with string 'mod_btlogin' to create a new CSS class for module. Example: 'mod_btlogin_abc', module class suffix is '_abc'
Caching	Select whether you want to cache content of this module

Common Error Using Product

Javascript Error

This error is coming frequently. The main reason here is that the website loads many JQuery files at the same time, or different javascript files are removed by plugins which manage javascript file. When this error is occurred, the module won't work well. Example:

- Unable to call login form
- After submit login data, browser will redirect to a white page with strange text

It's easy to check if you are used to Firebug add-on of Firefox or Inspect Element Window of Chrome. They will show you exactly the error.

* Solution: Often turn off plug-in or load query feature of modules so as to just one jquery file is loaded.

Error in BT Arise

BT Arise is our free template, many people are using it. And they often come across this error while upgrading BT Login. The reason of this error is that new version of BT Login don't suit current version of BT Arise. So you have to change a file of BT Arise to make the module work.

You can read this topic on our forum to fix problem.

<http://bowthemes.com/forums/topic/2048-bt-login-doesnt-work-on-bt-arise/>

Contacting Bowthemes

All Bowthemes products include forum support, email support and ticket support. Please refer your membership package to select the compatible kind of support, as we may be able to solve the problem without delay.

Website: <http://bowthemes.com>

Forum support: <http://bowthemes.com/forums/13-bt-login/>

Email support: support@bowthemes.com

Ticket support: <http://bowthemes.com/submit-a-ticket>

If you encounter any issues with Bowthemes extensions and templates, email us at support@bowthemes.com and we will be happy to answer your questions.



BOW THEMES
We make Joomla better

This document is proprietary and confidential. No part of this document may be disclosed in any manner to a third party without the prior written consent of Bowthemes Team.